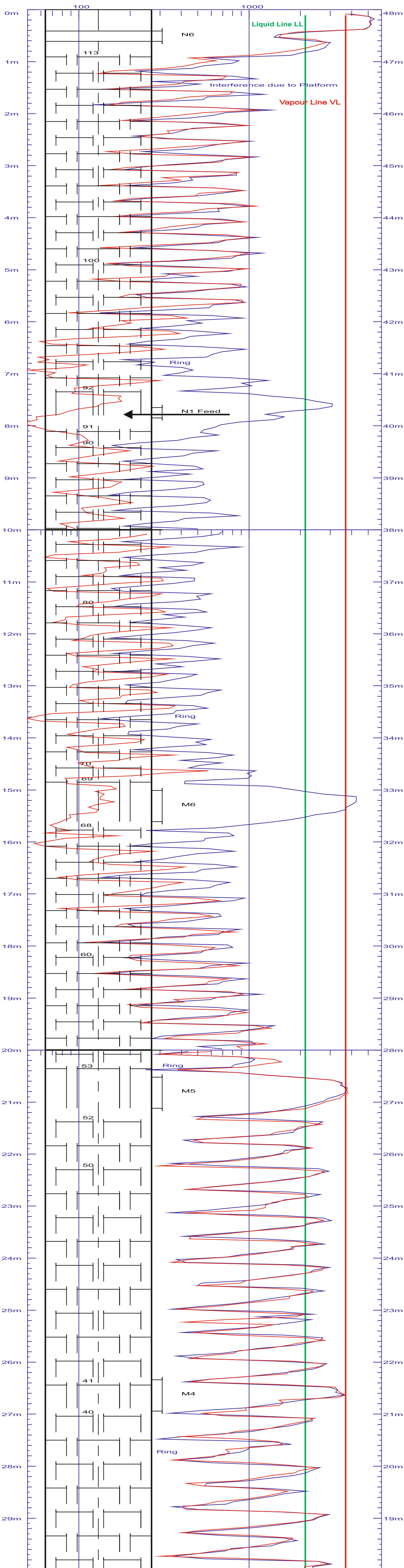


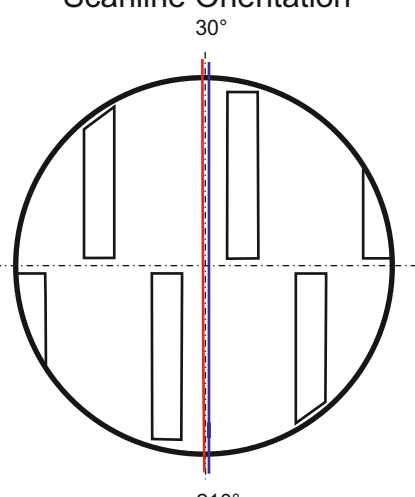
Country : Deutschland
City :
Company :
Titel : C3 Splitter
VesselNo:
Scales : 50 - 6000 Counts
Date : 1. 23.01.01 16:04-18:05

IBE Ingenieurbuero
Esper GmbH
Gamma-Prozess-Diagnostic
Tel. +49 6359 949390

2. 24.01.01 14:34-16:32



Scanline Orientation



Column revamp for capacity increase from 100% to 120% using high performance trays.
Maximum expected capacity was not achieved.
Red scanline at approx. 110% load:
Trays 53-113 with low tray space of 305 mm cope with jet flooding where trays 65-96 were already massive flooded.
Blue scanline at approx. 100% load:
Operating condition of approx. 100% load:
The trays 52-34 with the larger tray space of 460 mm are working normal at both loads with moderate to severe liquid entrainment.
With this scans it was clear demonstrated that this trays with low tray space of 305 mm were the bottleneck of the column.