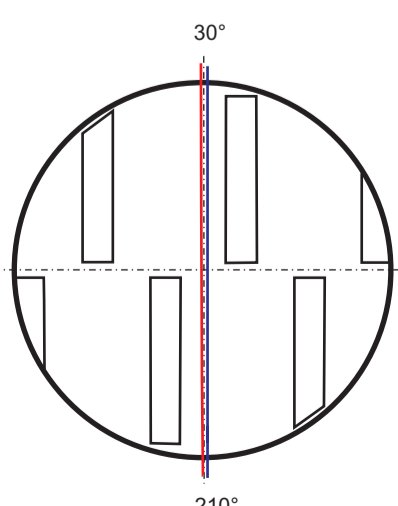
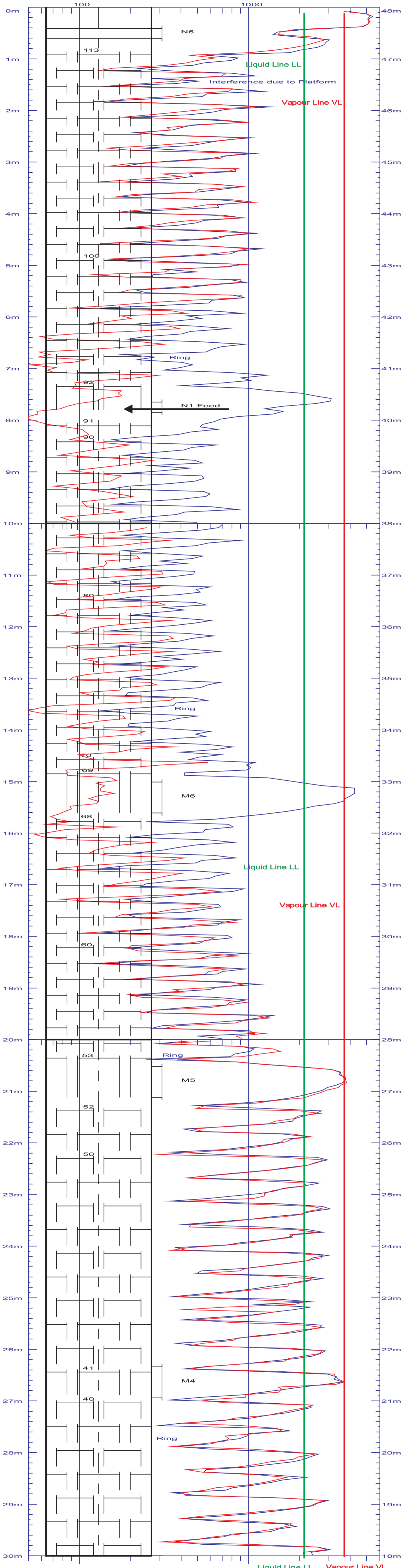


Country : Deutschland  
 City :  
 Company :  
 Titel : C3 Splitter  
 VesselNo :  
 Scales : 50 - 6000 Counts  
 Date : 1. 23.01.01 16:04-18:05

IBE Ingenieurbuero  
 Bulander&Esper GmbH  
 Gamma-Prozess-Diagnostic  
 Tel. +49 (0)6251-788-136,-106  
 Fax +49 (0)6251-788-134,-255  
 2. 24.01.01 14:34-16:32



Column revamp for capacity increase from 100% to 120% using high performance trays. Maximum expected capacity was not achieved. Red scanline at approx. 110% load: Trays 53-113 with low tray space of 305 mm cope with jet-flooding where trays 65-96 were already massive flooded. Blue scanline at approx. 100% load: Operating condition of flooded trays 65-96 improved but they cope still with jet flooding. The trays 52-34 with the larger tray space of 460 mm are working at both loads with moderate to severe liquid entrainment. With this scans it was clear demonstrated that this trays with low tray space of 305 mm were the bottleneck of the column.